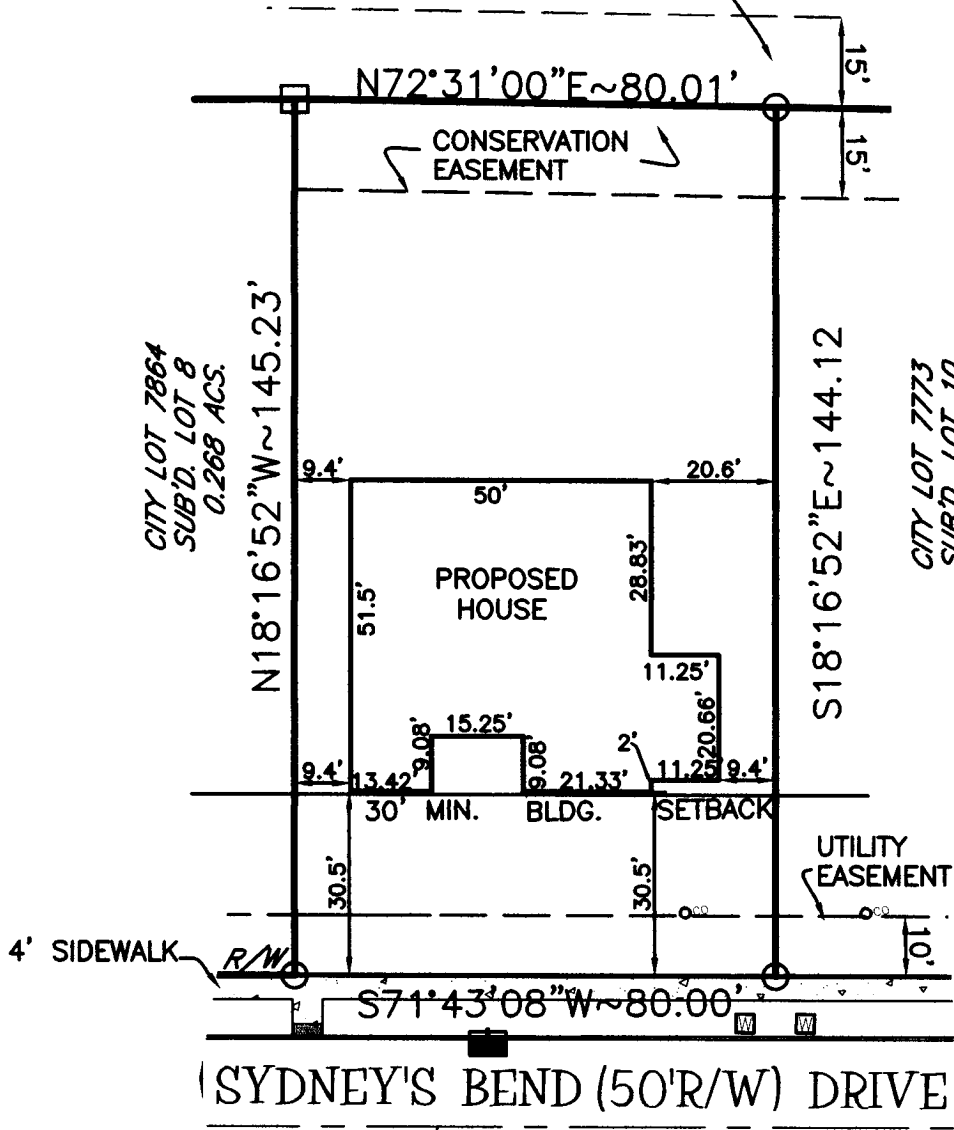


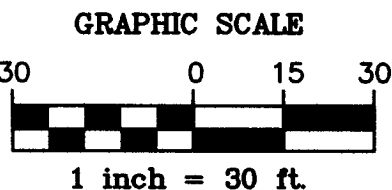


PT LOT 6985  
 KNISS AND ASSOCIATES, INC.  
 I.R.DEED#10-080051 (TRACT II)  
 8.674 ACS

CONSERVATION EASEMENT  
 I.R.EASE#04-013507-0009

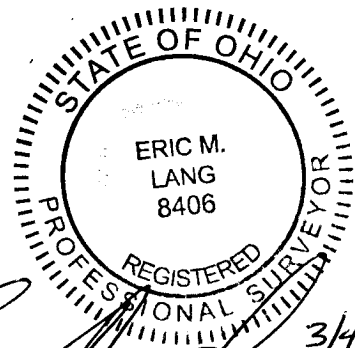


SYDNEY'S BEND SECTION 1  
 PLAT BOOK 196 PAGE 28  
 CITY LOT 7772  
 SUB'D. LOT 9  
 0.266 ACS.



BUILDING SETBACKS

FRONT YARD = 30'  
 REAR YARD = 35'  
 SIDE YARD = 7.5'



*Eric M. Lang*  
 Eric M. Lang PLS#8406  
 3/4/11